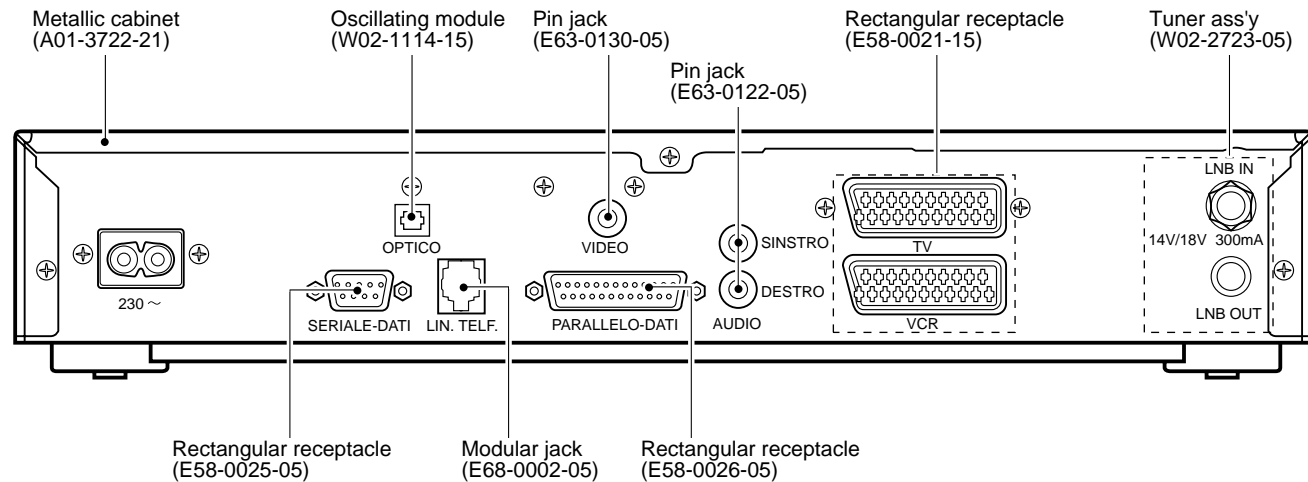
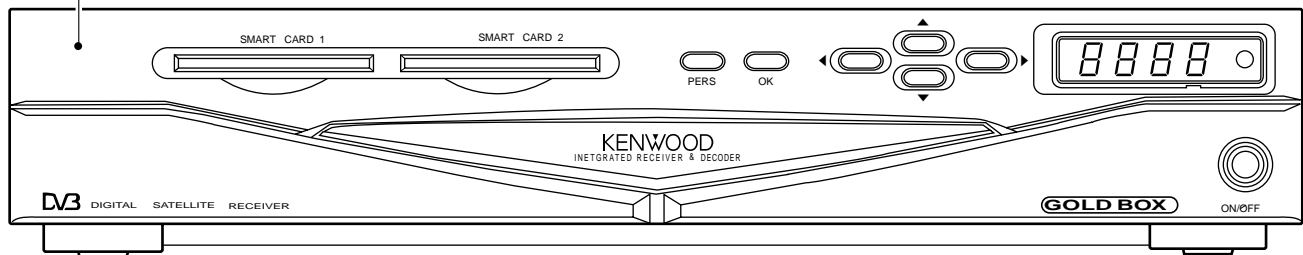


Panel ass'y*
(A60-1810-12)



ILLUST is ITALY model.

⚠ Caution : Replace with new PCB assy if switching power supply(W02-2725-05) is defective.

DTF-200

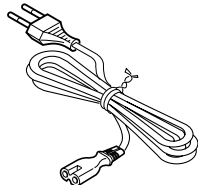
CONTENTS / ACCESSORIES

Contents

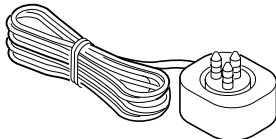
CONTENTS / ACCESSORIES	2	SCHEMATIC DIAGRAM	7
CONTROLS	3	EXPLODED VIEW	17
PC BOARD	4	PARTS LIST	Back cover

Accessories

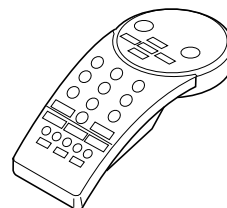
AC power cord(INLET)
(E30-2779-05)



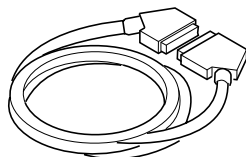
Cord with connector(MODEM)
(E30-2933-05)



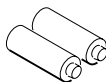
Remote controller ass'y
(A70-1324-05)



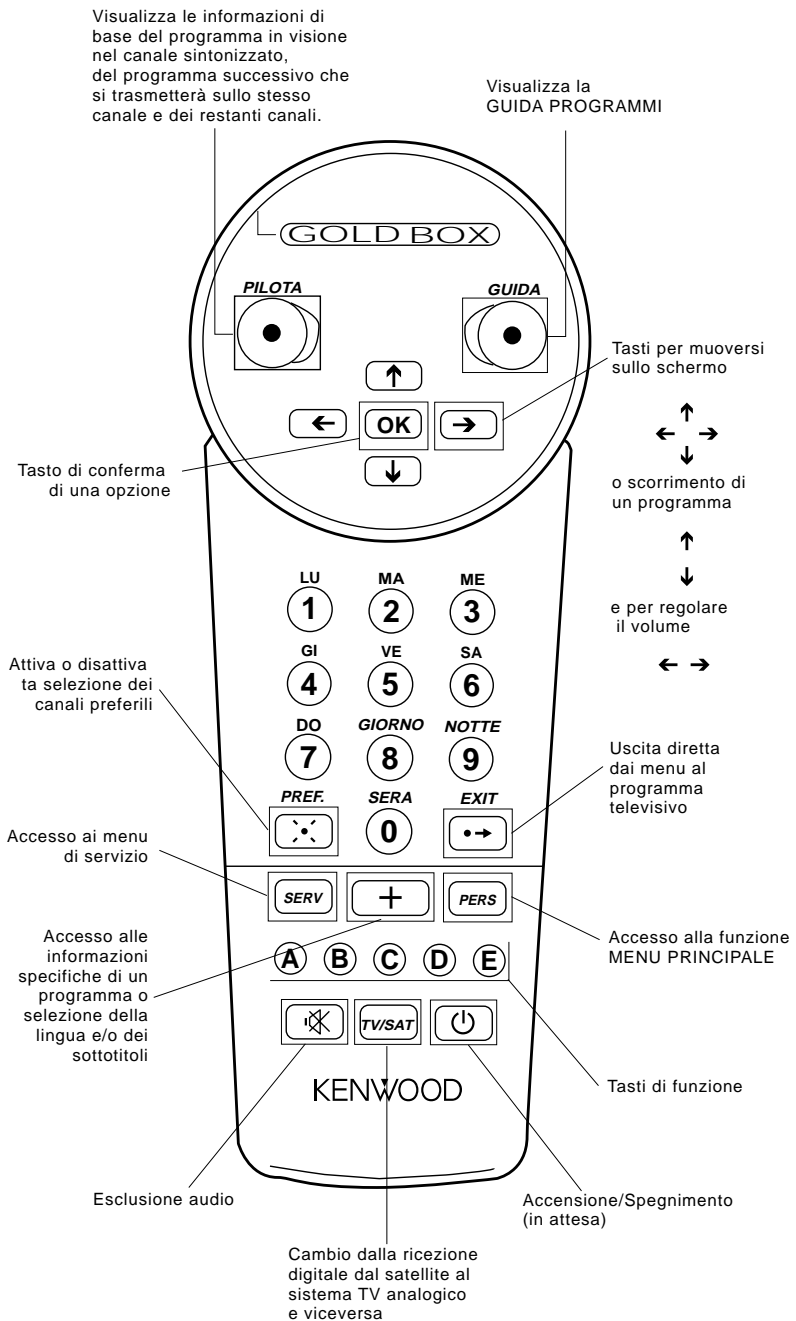
Cord with connector(SCART)
(E30-2916-05)



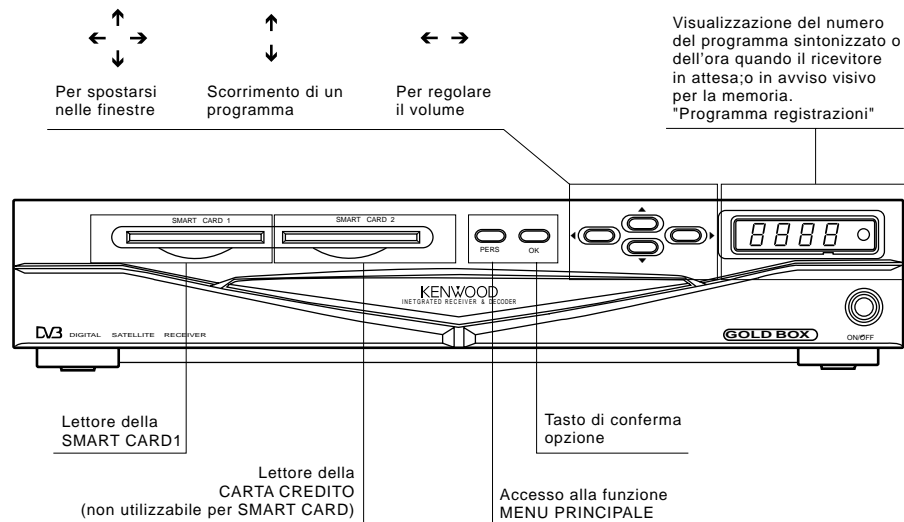
Batteries



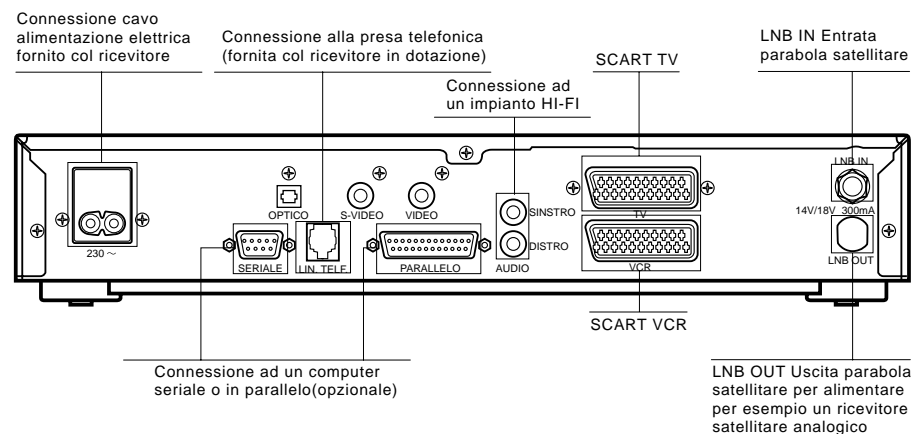
TELECOMANDO



PANNELLO FRONTALE DEL RICEVITORE



PANNELLO POSTERIORE DEL TERMINALE

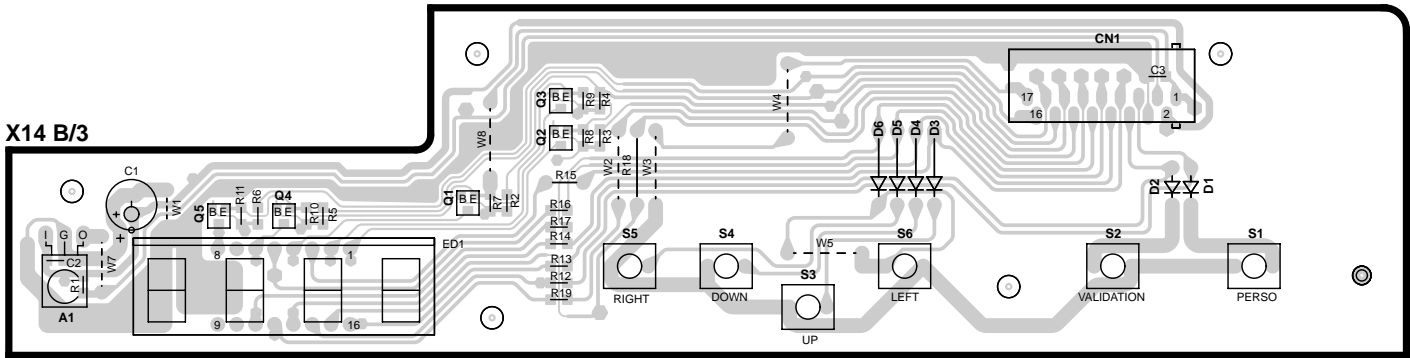


CONTROLS

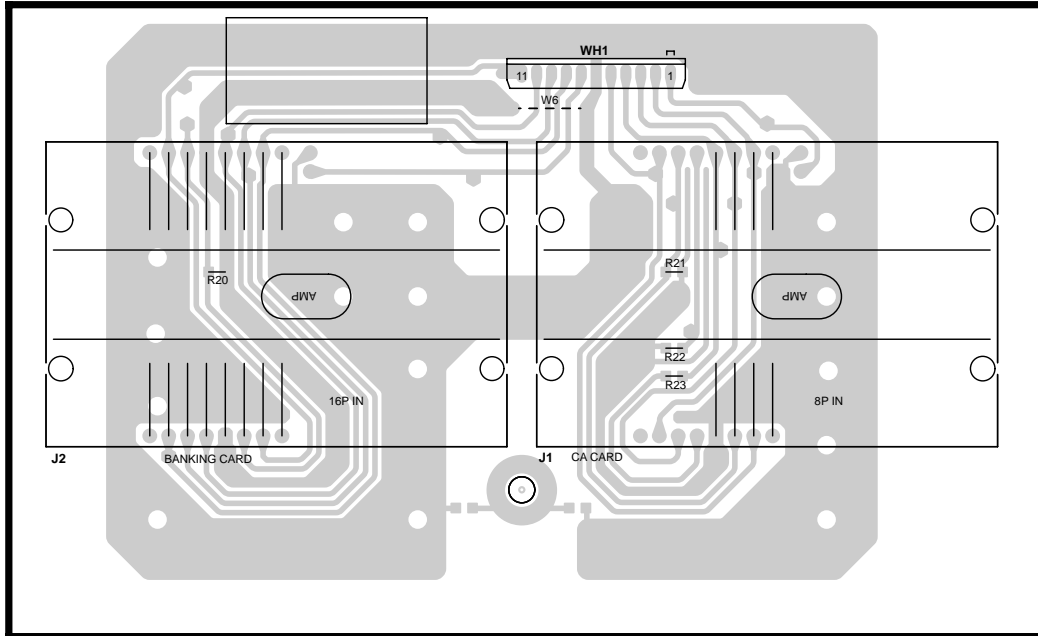
DTF-200

PC BOARD (Component side view)

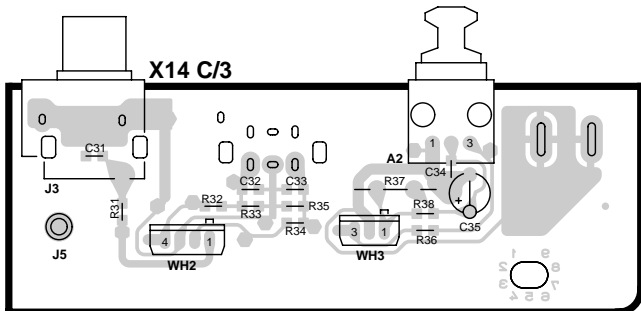
X14 B/3



X14-7102-71 A/3 (J70-1374-12)

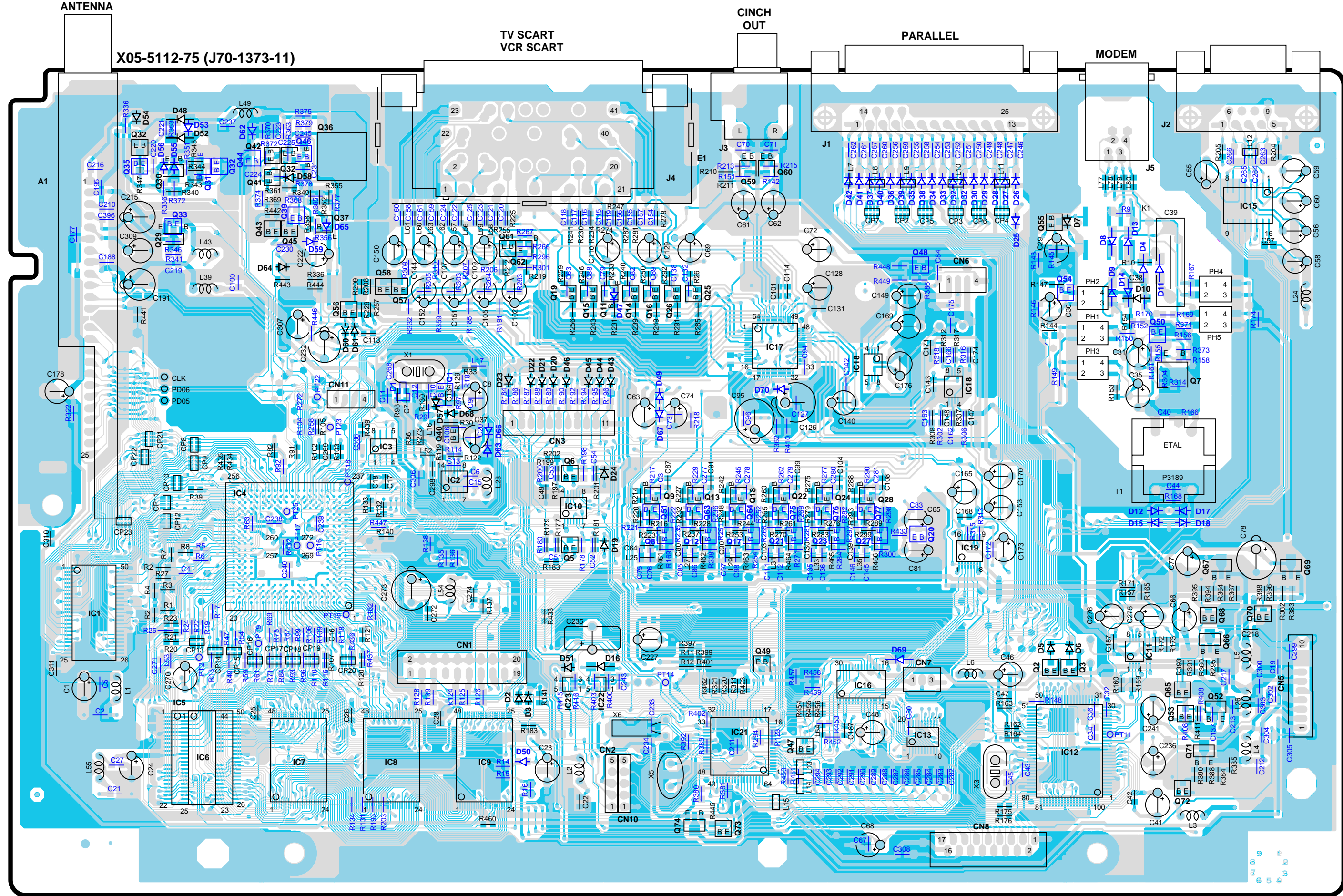


X14 C/3

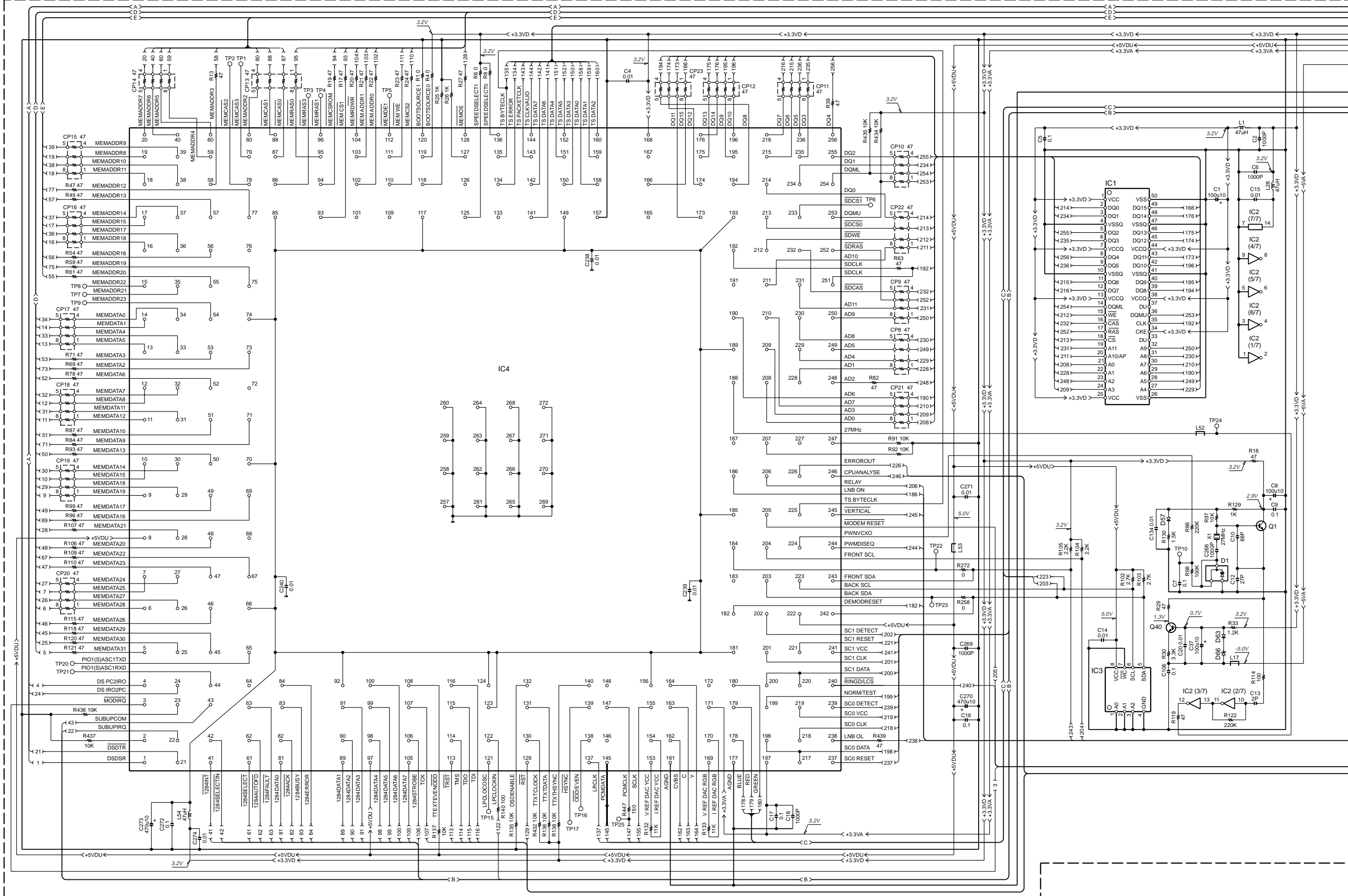


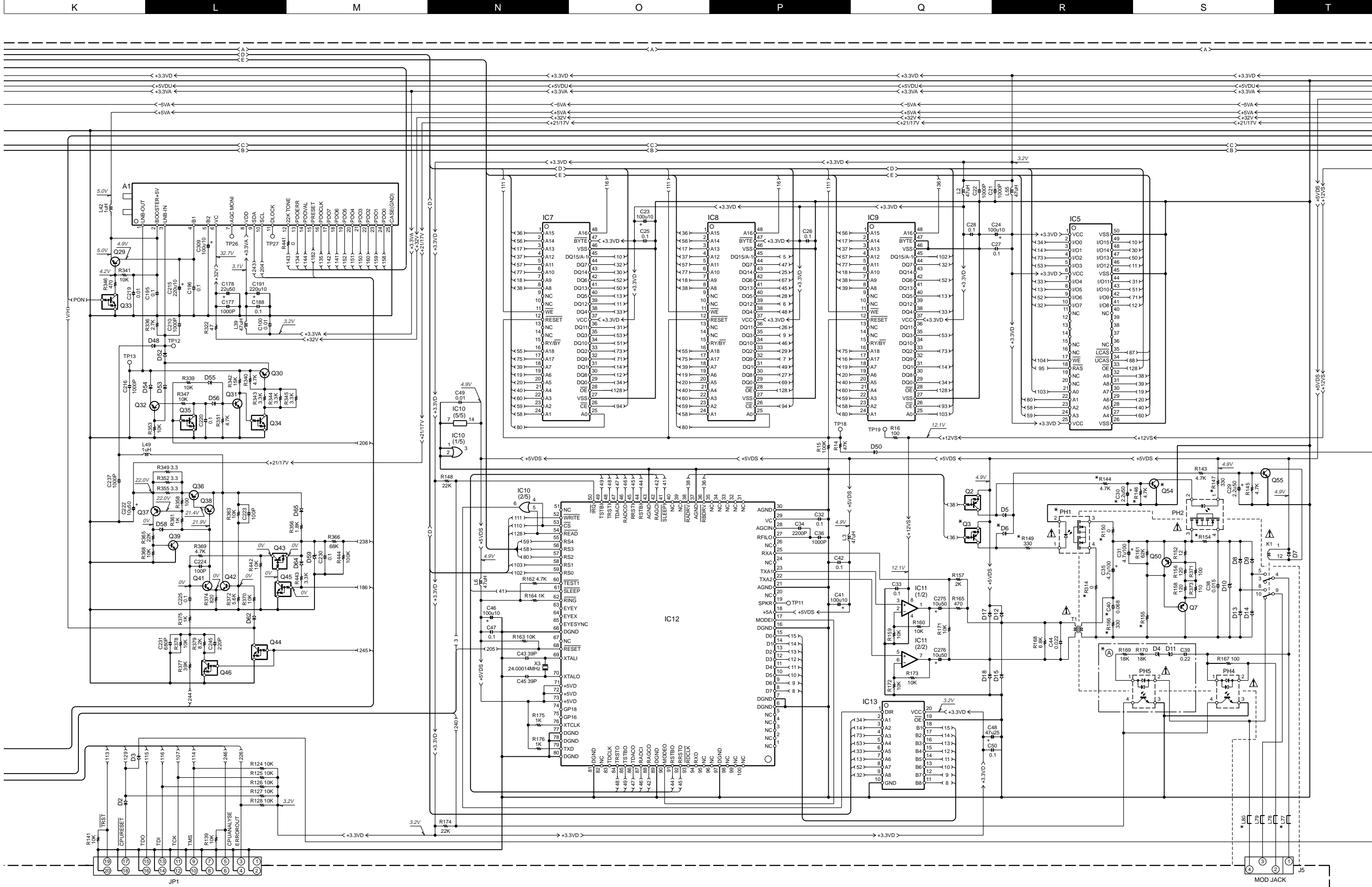
Refer to the schematic diagram for the value of resistors and capacitors.

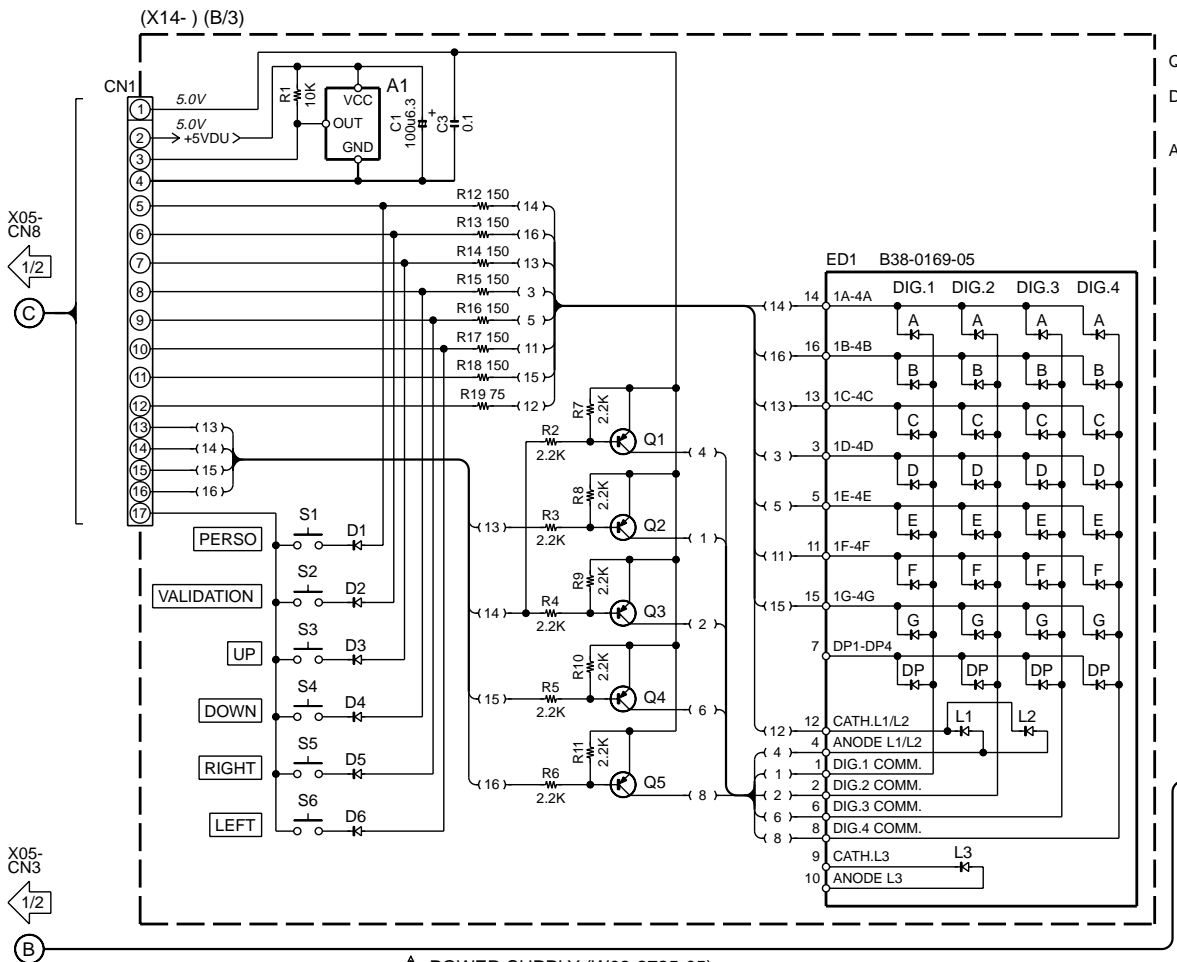
PC BOARD(Component side view)



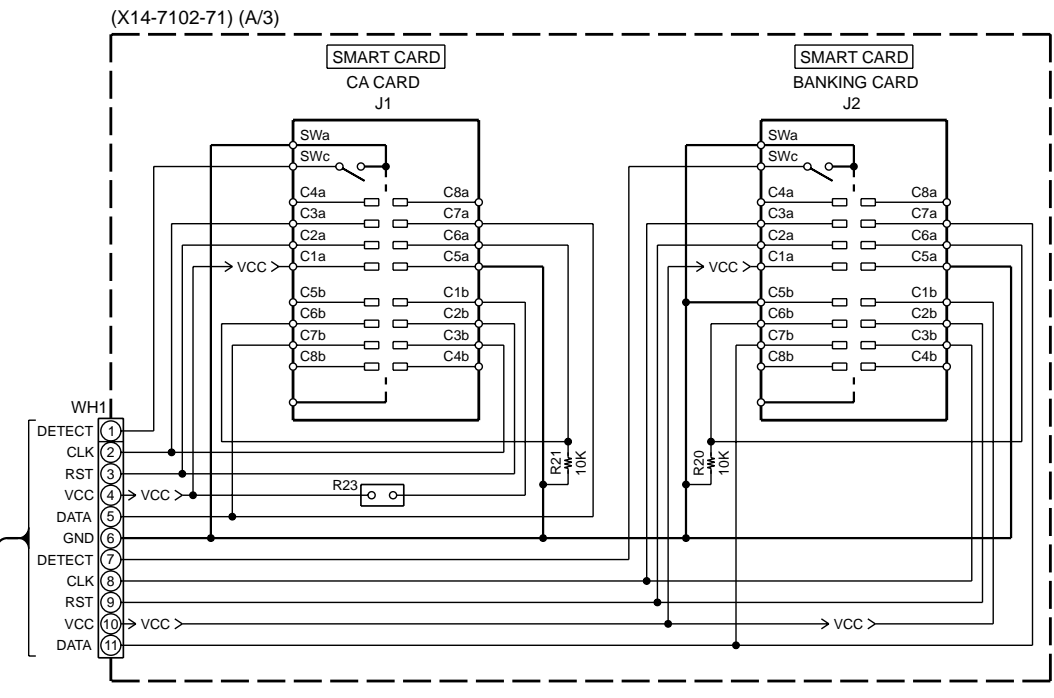
Refer to the schematic diagram for the value of resistors and capacitors.



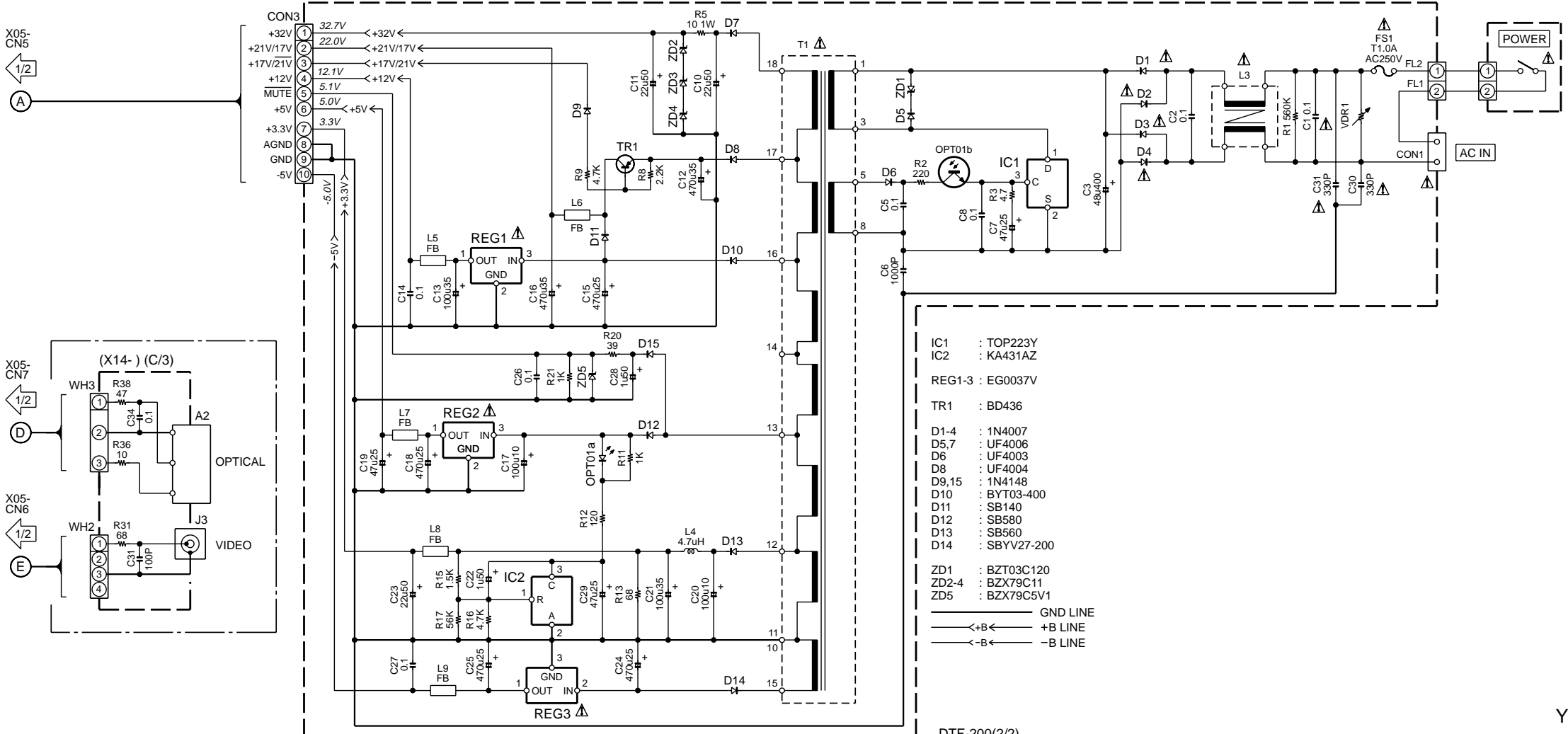




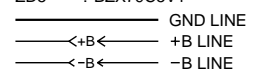
Q1-5 : 2SA1576(R,S)
 D1-6 : 1SS133 or HSS104A
 A1 : W02-2670-05



POWER SUPPLY (W02-2725-05)



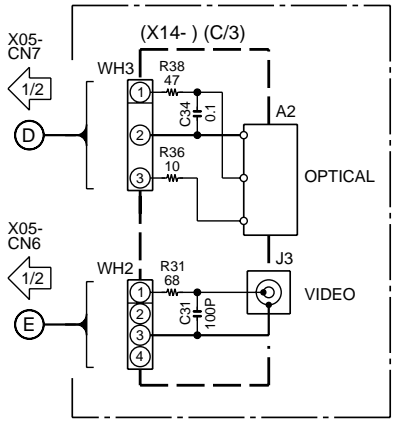
- IC1 : TOP223Y
- IC2 : KA431AZ
- REG1-3 : EG0037V
- TR1 : BD436
- D1-4 : 1N4007
- D5,7 : UF4006
- D6 : UF4003
- D8 : UF4004
- D9,15 : 1N4148
- D10 : BYT03-400
- D11 : SB140
- D12 : SB580
- D13 : SB560
- D14 : SBYV27-200
- ZD1 : BZT03C120
- ZD2-4 : BZX79C11
- ZD5 : BZX79C5V1



ATTENTION: POWER SUPPLY(W02-2725-05) needs replace only for repair.

CAUTION: For continued safety, replace safety critical components only with manufacturer's recommended parts (refer to parts list). Δ indicates safety critical components. For continued protection against risk of fire, replace only with same type and rating fuse(s). To reduce the risk of electric shock, leakage-current or resistance measurements shall be carried out (exposed parts are acceptably insulated from the supply circuit) before the appliance is returned to the customer.

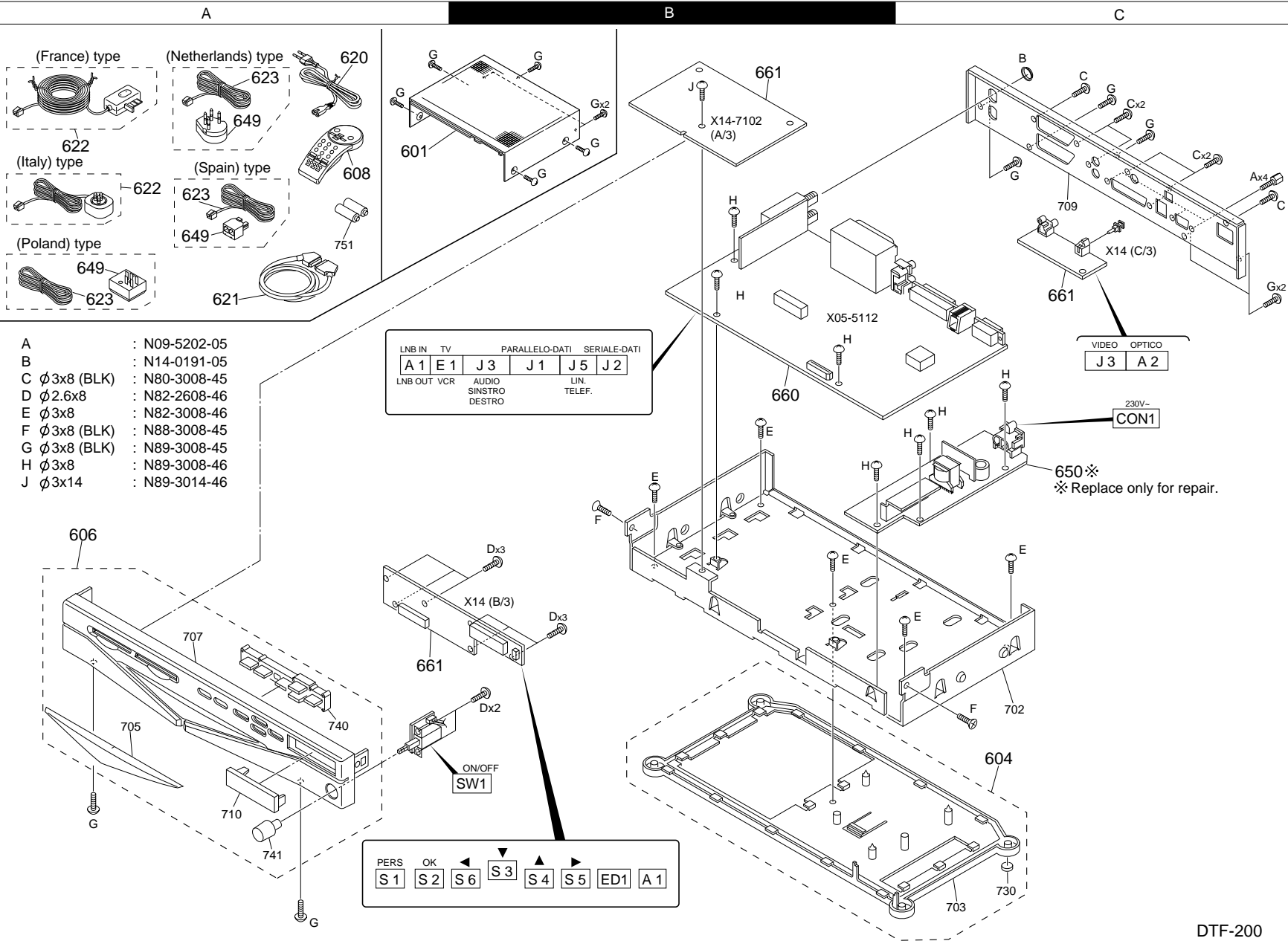
The DC voltage is an actual reading measured with a high impedance type voltmeter with no signal input. The measurement value may vary depending on the measuring instruments used or on the product.



EXPLODED VIEW (UNIT)

DTF-200

DTF-200



- A : N09-5202-05
- B : N14-0191-05
- C ϕ 3x8 (BLK) : N80-3008-45
- D ϕ 2.6x8 : N82-2608-46
- E ϕ 3x8 : N82-3008-46
- F ϕ 3x8 (BLK) : N88-3008-45
- G ϕ 3x8 (BLK) : N89-3008-45
- H ϕ 3x8 : N89-3008-46
- J ϕ 3x14 : N89-3014-46

LNB IN	TV	PARALLELO-DATI		SERIALE-DATI	
A 1	E 1	J 3	J 1	J 5	J 2
LNB OUT	VCR	AUDIO	LIN.	TELEF.	
		SINISTRO	DESTRO		

PERS	OK						
S 1	S 2	S 6	S 3	S 4	S 5	ED1	A 1

Parts with exploded numbers larger than 700 are not supplied.

* New Parts
Parts without **Parts No.** are not supplied.
Les articles non mentionnés dans le **Parts No.** ne sont pas fournis.
Teile ohne **Parts No.** werden nicht geliefert.

Ref. No	Address	New Parts	Parts No.	Description	Destination	Remarks
DISPLAY (X14-7102-71)						
J3			E63-0130-05	PIN JACK		
A1			W02-2670-05	OPTIC RECEIVING MODULE		
A2			W02-1114-15	OSCILLATING MODULE		

F : France I : Italy S : Spain N : Netherland

⚠ indicates safety critical components.

* New Parts
Parts without **Parts No.** are not supplied.
Les articles non mentionnés dans le **Parts No.** ne sont pas fournis.
Teile ohne **Parts No.** werden nicht geliefert.

Ref. No	Address	New Parts	Parts No.	Description	Destination	Remarks
DTF-200						
601	1A		A01-3722-21	METALLIC CABINET		
604	2C		A11-1183-02	SUB CHASSIS ASSY		
606	2A		A60-1809-12	PANEL ASSY	F	
606	2A		A60-1810-12	PANEL ASSY	I	
606	2A		A60-1812-12	PANEL ASSY	S	
606	2A		A60-1814-12	PANEL ASSY	N	
608	1A		A70-1324-05	REMOTE CONTROLLER ASSY	I	
608	1A		A70-1364-05	REMOTE CONTROLLER ASSY	F	
608	1A		A70-1365-05	REMOTE CONTROLLER ASSY	S	
608	1A		A70-1366-05	REMOTE CONTROLLER ASSY	N	
.			B46-0310-03	WARRANTY CARD	FSN	
.			B46-0349-03	WARRANTY CARD	I	
.			B60-4513-00	INSTRUCTION MANUAL	F	
.			B60-4514-00	INSTRUCTION MANUAL	I	
.			B60-4565-00	INSTRUCTION MANUAL	S	
.			B60-4566-00	INSTRUCTION MANUAL	N	
.			B60-4567-00	INSTRUCTION MANUAL	I	
.			B60-4568-00	INSTRUCTION MANUAL	F	
.			B60-4569-00	INSTRUCTION MANUAL	S	
.			B60-4570-00	INSTRUCTION MANUAL	N	
⚠ 620	1A		E30-2779-05	AC POWER CORD (INLET)		
621	1A		E30-2916-05	CORD WITH CONNECTOR(SCART)		
622	1A		E30-2917-05	CORD WITH CONNECTOR(MODEM)	F	
622	1A		E30-2933-05	CORD WITH CONNECTOR(MODEM)	I	
623	1A		E30-0000-05	CORD WITH CONNECTOR(MODEM)	S	
623	1A		E30-0000-05	CORD WITH CONNECTOR(MODEM)	N	
.			H10-7640-02	POLYSTYRENE FOAMED FIXTURE		
.			H10-7641-02	POLYSTYRENE FOAMED FIXTURE		
.			H13-0331-04	CARTON BOARD		
.			H21-0371-04	PROTECTION SHEET		
.			H25-0232-04	PROTECTION BAG (235X350X0.03)		
.			H30-0612-04	ADHESIVE DOUBLE-COATED TAPE		
.			H50-3581-04	ITEM CARTON CASE	F	
.			H50-3655-04	ITEM CARTON CASE	I	
.			H50-3656-04	ITEM CARTON CASE	S	
.			H50-3657-04	ITEM CARTON CASE	N	
649	1A		W02-0987-05	ADAPTER (MODEM)	N	
649	1A		W02-0986-05	ADAPTER (MODEM)	S	
⚠ 650	1C		W02-2725-05	ELECTRIC CIRCUIT(POWER SUPPLY)		
660	1B		X05-5112-74	TUNER UNIT	F	
660	1B		X05-5112-75	TUNER UNIT	I	
660	1B		X05-5112-76	TUNER UNIT	S	
660	1B		X05-5112-77	TUNER UNIT	N	
661	2A,1B		X14-7102-71	DISPLAY UNIT		
TUNER (X05-5112-75)						
J1			E58-0026-05	RECTANGULAR RECEPTACLE		
J2			E58-0025-05	RECTANGULAR RECEPTACLE		
J3			E63-0122-05	PIN JACK		
J4			E58-0021-15	RECTANGULAR RECEPTACLE		
J5			E68-0002-05	MODULAR JACK		
A1			W02-2723-05	TUNER ASSY		

F : France I : Italy S : Spain N : Netherland

⚠ indicates safety critical components.

Note:
Component and circuit are subject to modification to insure best operation under differing local conditions. This manual is based on Europe (E) standard, and provides information on regional circuit modification through use of alternate schematic diagrams, and information on regional component variations through use of parts list.

KENWOOD CORPORATION

14-6 Dogenzaka 1-chome, Shibuya-ku, Tokyo, 150-8501 Japan

KENWOOD ELECTRONICS ITALIA S.p.A.

Via G. Sironi, 7/9 20129, Milano, Italy